

Introducing the

2020 Advantage service agreement

Now Featuring the **V7 CARTO PRIME® Module**

The 2020 Advantage Service Agreement (ASA) gives you piece of mind by satisfying all CARTO® 3 System lab needs to stay covered, current and cost-effective, and includes:*

Premium Service

- 3 year priority service for your CARTO® 3 System and SMARTABLATE® System

System Upgrades

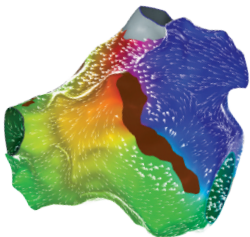
- CARTO PRIME® Advanced Mapping Module
- Next Generation Workstation
- Legacy add-ons at a discounted rate

Future Innovation

- Next Generation Software Modules and Hardware

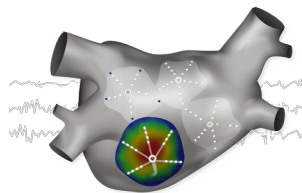
* Availability of any new products or services is at the sole discretion of Biosense Webster, Inc. and subject to the terms and conditions of the ASA contract or Premium Plus contract as applicable. Biosense Webster, Inc. is under no obligation to, and may not launch, any new product that shall be considered new equipment or software upgrades under the ASA or Premium Plus program as applicable.

CARTO PRIME® Module offers a suite of tools designed to streamline and accelerate the diagnosis of complex arrhythmias together with improving lab efficiencies.



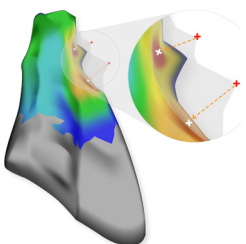
Coherent Mapping

May simplify complex atrial arrhythmia mapping and ablation target¹



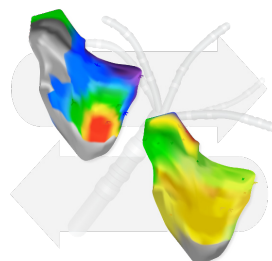
CARTOFINDER® Module

Aids in understanding repetitive **focal** and **rotational** patterns²



LAT Hybrid

Increased location **accuracy** on PVC mapping*³

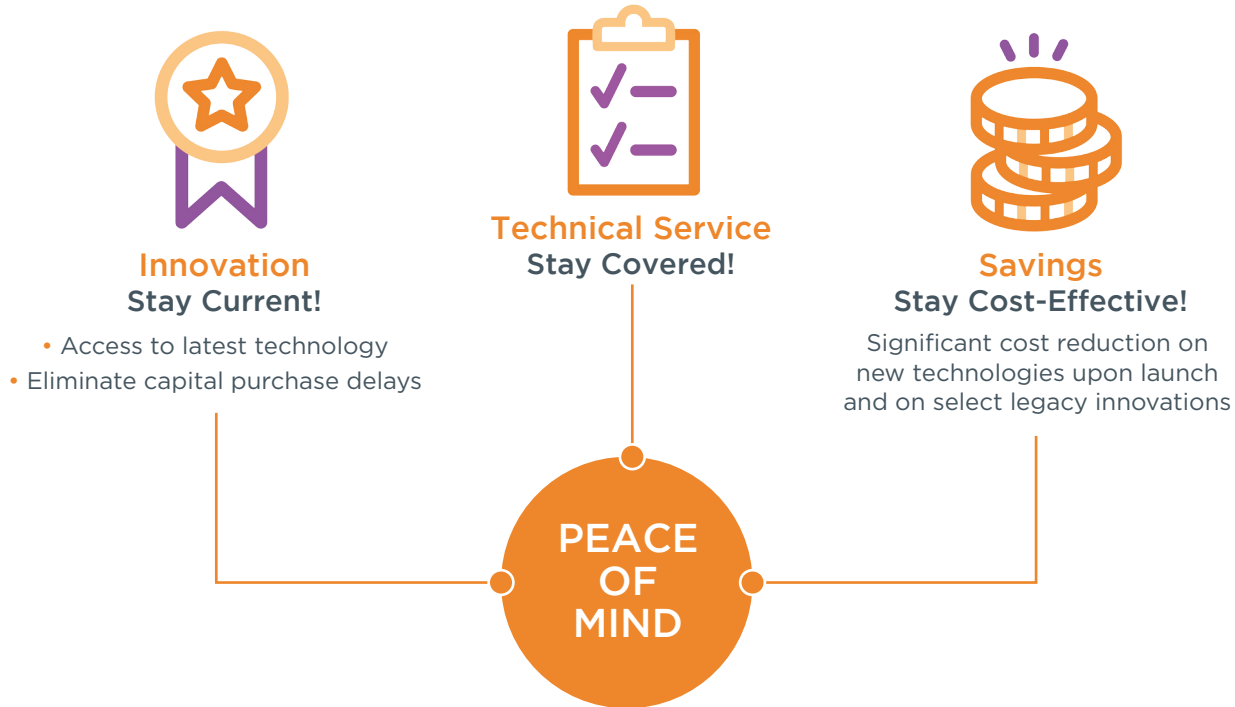


Parallel Mapping

Simultaneously map multiple arrhythmias prospectively or retrospectively

*As compared with standard PVC mapping.

With the ASA, you guarantee reduced lab downtime through priority technical service along with budget predictability through the inclusion of future software and hardware innovation for the next three years.



Ask your Biosense Webster, Inc. sales representative how this customizable ASA can unlock your lab's full potential for the next three years, starting today!

1. Anter E et al. Activation Mapping with Integration of Vector and Velocity Information Improves the Ability to Identify the Mechanism and Location of Complex Scar Related Atrial Tachycardias. *Circ Arrhythm Electrophysiol.* 2018;11:e006536.
2. Bench testing performed by Biosense Webster, Inc. CARTO® 3 System V7 CARTOFINDER® Module Algorithm POD Report February 2019.
3. Steyers III CM et al. Ablation using 3D maps adjusted for spatial displacement of premature ventricular complexes relative to sinus beats: Improving precision by correcting for the shift. *J Cardiovasc Electrophysiol.* 2019;1-7. 3

THERMOCOOL® Navigation Catheters are indicated for the treatment of drug refractory recurrent symptomatic paroxysmal atrial fibrillation, when used with CARTO® 3 Systems (excluding NAVISTAR® RMT THERMOCOOL® Catheter). THERMOCOOL® Navigation Catheters are indicated for the treatment of recurrent drug/device refractory sustained monomorphic ventricular tachycardia (VT) due to prior myocardial infarction (MI) in adults.

Important information: Prior to use, refer to the instructions for use supplied with this device for indications, contraindications, side effects, warnings and precautions.

Caution: US law restricts this device to sale by or on the order of a physician.

Biosense Webster, Inc.
31 Technology Drive, Suite 200 Irvine, CA 92618 USA
Tel: +1-909-839-8500 Tel: +1-800-729-9010
www.biosensewebster.com